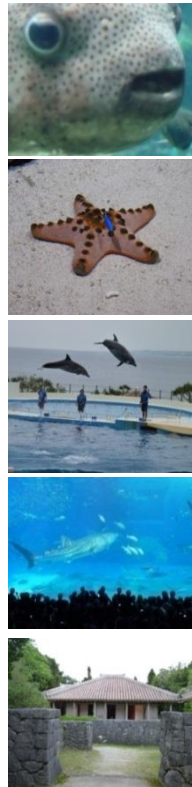
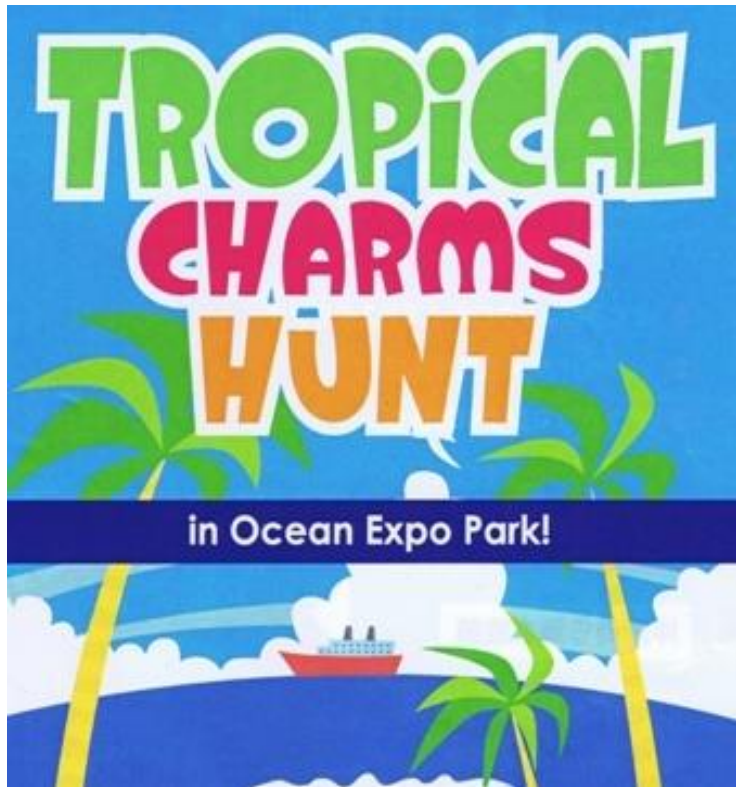


This mission-clear style game takes place in the Ocean Expo Park, where Okinawa's most popular tourist attraction Okinawa Chura-umi Aquarium stands. The game is programmed to provide atmosphere for participants to enhance personnel interchanges, and strengthening team skills. This mission-clear style game is effective as an ice-breaking activity.



The world largest fish tank at Okinawa Chura-umi Aquarium

Okinawa Chura-umi Aquarium lets you experience miraculous sea creatures and their grand habitat - the Okinawan coastal waters. The main attraction is the impressive fish tank "Kuroshio" where you encounter the largest fish of all kind whale sharks, and manta rays some of which are bred at this aquarium. This is where you can get closer to Okinawan waters both deep sea and shallow tide pools.

This program is designed for participants to feel Okinawa's diversified living environment, culture and lifestyle while enjoying mission-clear style game in or around Okinawa Chura-umi Aquarium.

Four to ten people form a team and solve quizzes or questions.

The purpose of the game is to improve team's collective strength by clearing tasks and enjoying various displays about Okinawan waters and sea creatures as well as entertainment shows at the aquarium.

The duration of the game is set at 3 hours. This program is effective to stimulate communicative approach, and to create a more open feel in an organization.